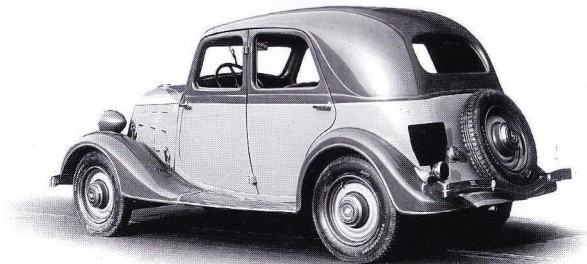


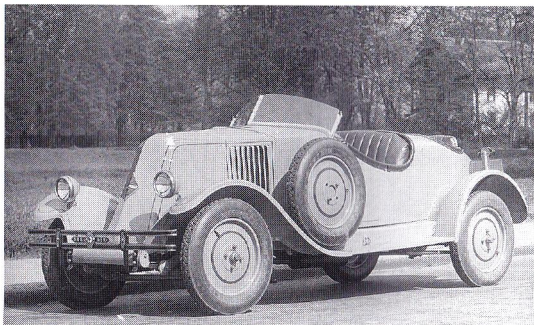
**1925**

*Type NN, 4 cyl., 6 CV*



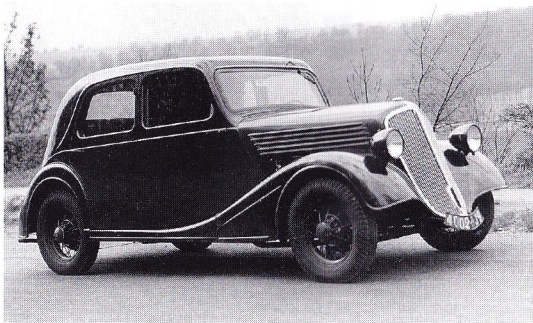
**1934**

*Type ZR1, 4 cyl., 8 CV  
CELTAQUATRE*



**1928**

*Type RY, 6 cyl., 8 CV  
MONASIX carrosserie LAVOCAT et MARCEAU*



**1935**

*Type ADCI, 4 cyl., 8 CV  
CELTAQUATRE*